

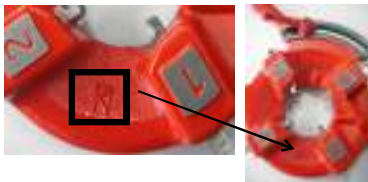
Dies & Die Head Compatibility Chart for Regular Dies (SKS)

Machine	Die Head	Dies
---------	----------	------

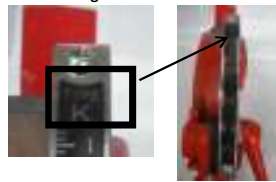
Regular	ID	Die Head (Item No)	BSPT/NPT	Size	Color	Indication Letter	on Size Gauge	MCC250	MCC32W***	MCC400/MCC40W***	MCC500/MCC50W***	MCC800/MCC80W***	MCC100DX***					
MD Manual	HMD10	PMHMD10	BSPT	1/4"-3/8"	Red	10	MD10	PMHCPT01	1/4"-3/8"									
			NPT	1/4"-3/8"	Red	10	MD10	PMHCNP01	1/4"-3/8"									
	MDK	PMDK05	BSPT	1/4"-2"	Red	K	TYPE K		PMCKB01	1/4"-3/8"	PMCKB01	1/4"-3/8"	PMCKB01	1/4"-3/8"	PMCKB01	1/4"-3/8"	PMCKB01	1/4"-3/8"
									PMCKB02	1/2"-3/4"	PMCKB02	1/2"-3/4"	PMCKB02	1/2"-3/4"	PMCKB02	1/2"-3/4"	PMCKB02	1/2"-3/4"
			NPT	1/4"-2"	Red	K	TYPE K		PMCKB05	1"-2"	PMCKB05	1"-2"	PMCKB05	1"-2"	PMCKB05	1"-2"	PMCKB05	1"-2"
									PMCKN01	1/4"-3/8"	PMCKN01	1/4"-3/8"	PMCKN01	1/4"-3/8"	PMCKN01	1/4"-3/8"	PMCKN01	1/4"-3/8"
								PMCKN02	1/2"-3/4"	PMCKN02	1/2"-3/4"	PMCKN02	1/2"-3/4"	PMCKN02	1/2"-3/4"	PMCKN02	1/2"-3/4"	
								PMCKN05	1"-2"	PMCKN05	1"-2"	PMCKN05	1"-2"	PMCKN05	1"-2"	PMCKN05	1"-2"	
old model	MDH	PMDBS05	BSPT	1/4"-2"	Red	H	BSPT		PMCBS01	1/4"-3/8"	PMCBS01	1/4"-3/8"	PMCBS01	1/4"-3/8"	PMCBS01	1/4"-3/8"	PMCBS01	1/4"-3/8"
									PMCBS02	1/2"-3/4"	PMCBS02	1/2"-3/4"	PMCBS02	1/2"-3/4"	PMCBS02	1/2"-3/4"	PMCBS02	1/2"-3/4"
old model									PMCHBS05	1"-2"	PMCHBS05	1"-2"	PMCHBS05	1"-2"	PMCHBS05	1"-2"	PMCHBS05	1"-2"
old model									PMCNP01	1/4"-3/8"	PMCNP01	1/4"-3/8"	PMCNP01	1/4"-3/8"	PMCNP01	1/4"-3/8"	PMCNP01	1/4"-3/8"
old model									PMCNP02	1/2"-3/4"	PMCNP02	1/2"-3/4"	PMCNP02	1/2"-3/4"	PMCNP02	1/2"-3/4"	PMCNP02	1/2"-3/4"
old model									PMCHNP05	1"-2"	PMCHNP05	1"-2"	PMCHNP05	1"-2"	PMCHNP05	1"-2"	PMCHNP05	1"-2"
old model	MD80	PMDM108	BSPT	2 1/2"-3"	Silver	80	MD80						PMCP08	2 1/2"-3"	PMCP08	2 1/2"-3"		
			NPT	2 1/2"-3"	Silver	80	NPT							PMCP08	2 1/2"-3"	PMCP08	2 1/2"-3"	
old model	MD100	PMDM110	BSPT	3 1/2"-4"	Silver	100	TYPE G1									PMCP10	3 1/2"-4"	
			NPT	3 1/2"-4"	Silver	100	NPT										PMCP10	3 1/2"-4"
old model	MDA1	***	BSPT	1/4"-1 1/4"	Red	A or A1	None		PMCG001	1/4"-3/8"	PMCG001	1/4"-3/8"	PMCG001	1/4"-3/8"	PMCG001	1/4"-3/8"	PMCG001	1/4"-3/8"
									PMCP02	1/2"-3/4"	PMCP02	1/2"-3/4"	PMCP02	1/2"-3/4"	PMCP02	1/2"-3/4"	PMCP02	1/2"-3/4"
old model									PMCP03	1"-1 1/4"	PMCP03	1"-1 1/4"	PMCP03	1"-1 1/4"	PMCP03	1"-1 1/4"	PMCP03	1"-1 1/4"
old model	MDB1	***	BSPT	1-2"	Red	B or B1	None						PMCP03	1"-1 1/4"	PMCP03	1"-1 1/4"	PMCP03	1"-1 1/4"
														PMCP05	1 1/2"-2"	PMCP05	1 1/2"-2"	PMCP05
old model	MDC1	***	BSPT	2 1/2"-3"	Red	C or C1	None						PMCP08	2 1/2"-3"	PMCP08	2 1/2"-3"	PMCP08	2 1/2"-3"
old model																		
old model	MDG1	***	BSPT	3 1/2"-4"	Red	None or 100	TYPE G1									PMCP10	3 1/2"-4"	
old model																		
																PMCP10	3 1/2"-4"	
AD Self-Opening	HAD25N	PMHAD11	BSPT	1/2"-1"	Silver	25	AD25	PMHCPT02	1/2"-3/4"									
			NPT	1/2"-1"	Silver	25	AD25	PMHCNP02	1/2"-3/4"									
	AD20	PMDAD02	BSPT	1/2"-3/4"	Silver	20	AD20		PMHCNP03	1"								
									PMCP02	1/2"-3/4"	PMCP02	1/2"-3/4"	PMCP02	1/2"-3/4"	PMCP02	1/2"-3/4"	PMCP02	1/2"-3/4"
	AD40	PMDAD04	BSPT	1"-1 1/2"	Silver	40	AD40		PMCP04	1-1 1/2"	PMCP04	1-1 1/2"						
	AD50	PMDAD05	BSPT	1"-2"	Silver	50	AD50					PMCP04	1-1 1/2"					
	AD80	PMDAD08	BSPT	2 1/2"-3"	Silver	80	AD80					PMCP04	1-1 1/2"	PMCP04	1-1 1/2"	PMCP04	1-1 1/2"	
old model	AD100	PMDAD10	BSPT	3 1/2"-4"	Silver	100	None						PMCP04	1-1 1/2"	PMCP04	1-1 1/2"	PMCP04	1-1 1/2"
old model																		
old model	HAD25	***	BSPT	1/2"-1"	Black	25	None	PMHCPT02	1/2"-3/4"									
old model																		
old model									PMHCNP02	1/2"-3/4"								
old model									PMHCNP03	1"								
old model	AD-A	***	BSPT	1/2"-3/4"	Red	A	None		PMCP02	1/2"-3/4"	PMCP02	1/2"-3/4"	PMCP02	1/2"-3/4"	PMCP02	1/2"-3/4"	PMCP02	1/2"-3/4"
old model	AD-K	***	BSPT	1"-2"	Yellow	K	None		PMCP02	1/2"-3/4"	PMCP02	1/2"-3/4"	PMCP02	1/2"-3/4"	PMCP02	1/2"-3/4"	PMCP02	1/2"-3/4"
old model	AD-C	***	BSPT	2 1/2"-3"	Red	C	None		PMCP02	1/2"-3/4"	PMCP02	1/2"-3/4"	PMCP02	1/2"-3/4"	PMCP02	1/2"-3/4"	PMCP02	1/2"-3/4"
old model	AD-G	***	BSPT	3 1/2"-4"	Red	None or 100	None		PMCP02	1/2"-3/4"	PMCP02	1/2"-3/4"	PMCP02	1/2"-3/4"	PMCP02	1/2"-3/4"	PMCP02	1/2"-3/4"

*** Discontinued Item

Indication Letter



on Size Gauge



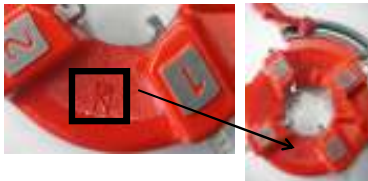
Dies & Die Head Compatibility Chart for High Speed (HSS-SKH) Dies

Machine	Die Head	Dies
---------	----------	------

HSS(SKH)	ID	Die Head (Item No)	BSPT/NPT	Size	Color	Indication Letter	on Size Gauge	MCC250	MCC32W***	MCC400/MCC40W***	MCC500/MCC50W***	MCC800/MCC80W***	MCC100DX***				
MD Manual 	HMD10	PMHMD10	BSPT	1/4"-3/8"	RED	10	MD10	PSHCPT01	1/4"-3/8"								
			NPT	1/4"-3/8"	RED	10	MD10										
	MDK	PMDK05	BSPT	1/4"-2"	RED	K	TYPE K		PSCKB01 PSCKB02 PSCKB05	1/4"-3/8" 1/2"-3/4" 1"-2"	PSCKB01 PSCKB02 PSCKB05	1/4"-3/8" 1/2"-3/4" 1"-2"	PSCKB01 PSCKB02 PSCKB05	1/4"-3/8" 1/2"-3/4" 1"-2"	PSCKB01 PSCKB02 PSCKB05	1/4"-3/8" 1/2"-3/4" 1"-2"	
			NPT	1/4"-2"	RED	K	TYPE K		PSCKN02 PSCKN05	1/2"-3/4" 1"-2"	PSCKN02 PSCKN05	1/2"-3/4" 1"-2"	PSCKN02 PSCKN05	1/2"-3/4" 1"-2"	PSCKN02 PSCKN05	1/2"-3/4" 1"-2"	
	MDH	PMDBS05	BSPT	1/4"-2"	RED	H	BSPT		PSCBS02 PSCBS05	1/2"-3/4" 1"-2"	PSCBS02 PSCBS05	1/2"-3/4" 1"-2"	PSCBS02 PSCBS05	1/2"-3/4" 1"-2"	PSCBS02 PSCBS05	1/2"-3/4" 1"-2"	
			NPT	1/4"-2"	RED	H	NPT										
	MD80	PMDM108	PMDNP08	BSPT	2 1/2"-3"	SILVER	80	MD80						PSCG008	2 1/2"-3"	PSCG008	2 1/2"-3"
				NPT	2 1/2"-3"	SILVER	80	NPT									
	MD100	PMDM110	PMDNP10	BSPT	3 1/2"-4"	SILVER	100	TYPE G1							PSCG010	3 1/2"-4"	
				NPT	3 1/2"-4"	SILVER	100	NPT									
MDA1	***	BSPT	1/4"-1 1/4"	RED	A or A1	None	None		PSCG001 PSCG002 PSCG003	1/4"-3/8" 1/2"-3/4" 1"-1 1/4"	PSCG001 PSCG002 PSCG003	1/4"-3/8" 1/2"-3/4" 1"-1 1/4"	PSCG001 PSCG002 PSCG003	1/4"-3/8" 1/2"-3/4" 1"-1 1/4"	PSCG001 PSCG002 PSCG003	1/4"-3/8" 1/2"-3/4" 1"-1 1/4"	
MDB1	***	BSPT	1-2"	RED	B or B1	None	None				PSCG003 PSCG005	1"-1 1/4" 1 1/2"-2"	PSCG003 PSCG005	1"-1 1/4" 1 1/2"-2"	PSCG003 PSCG005	1"-1 1/4" 1 1/2"-2"	
MDC1	***	BSPT	2 1/2"-3"	RED	C or C1	None						PSCG008	2 1/2"-3"	PSCG008	2 1/2"-3"		
		NPT	2 1/2"-3"	RED	C or C1	NPT											
MDG1	***	BSPT	3 1/2"-4"	RED	100 or none	TYPE G1								PSCG010	3 1/2"-4"		
		NPT	3 1/2"-4"	RED	100 or none	NPT											
AD Self-Opening 	HAD25N	PMHAD11	BSPT	1/2"-1"	SILVER	25	AD25	PSHCPT02 PSHCPT03	1/2"-3/4" 1"								
			NPT	1/2"-1"	SILVER	25	AD25										
	AD20	PMDAD02	BSPT	1/2"-3/4"	SILVER	20	AD20		PSCG002	1/2"-3/4"	PSCG002	1/2"-3/4"	PSCG002	1/2"-3/4"	PSCG002	1/2"-3/4"	
	AD40	PMDAD04	BSPT	1"-1 1/2"	SILVER	40	AD40		PSCG004	1-1 1/2"	PSCG004	1-1 1/2"					
	AD50	PMDAD05	BSPT	1"-2"	SILVER	50	AD50					PSCG051AK	1"-2"	PSCG051AK	1"-2"		
	AD80	PMDAD08	BSPT	2 1/2"-3"	SILVER	80	AD80						PSCG008	2 1/2"-3"	PSCG008	2 1/2"-3"	
	AD100	PMDAD10	BSPT	3 1/2"-4"	SILVER	100	None								PSCG010	3 1/2"-4"	
	HAD25	***	BSPT	1/2"-1"	BLACK	25	None	PSHCPT02 PSHCPT03	1/2"-3/4" 1"								
			NPT	1/2"-1"	BLACK	25	None										
	AD-A	***	BSPT	1/2"-3/4"	RED	A	None		PSCG002	1/2"-3/4"	PSCG002	1/2"-3/4"	PSCG002	1/2"-3/4"	PSCG002	1/2"-3/4"	
AD-K	***	BSPT	1"-2"	YELLOW	K	None		PSCG051AK	1"-2"	PSCG051AK	1"-2"	PSCG051AK	1"-2"	PSCG051AK	1"-2"		
AD-C	***	BSPT	2 1/2"-3"	RED	C	None						PSCG008	2 1/2"-3"	PSCG008	2 1/2"-3"		
AD-G	***	BSPT	3 1/2"-4"	RED	100 or none	None								PSCG010	3 1/2"-4"		

*** Discontinued Item

Indication Letter



on Size Gauge

